

# 2200mA lithium battery

Cod.: KE5160002

## Technical features

Color: Black

Nominal output: 25.9V / 2200mAh

Max charge voltage: 29.4VDC

Max discharge current: 5A

Duty cycle: 10% - max 2min ON / 18min OFF

Duration: about 300 charges

Charging time with universal transformer: 3.5 h

## Cycles

Relax mechanism cycles: around 180\*

Lift mechanism cycles: around 50\*

Headrest cycles: around 290\*\*

Relax mechanism + headrest cycles: around 150\*/\*\*

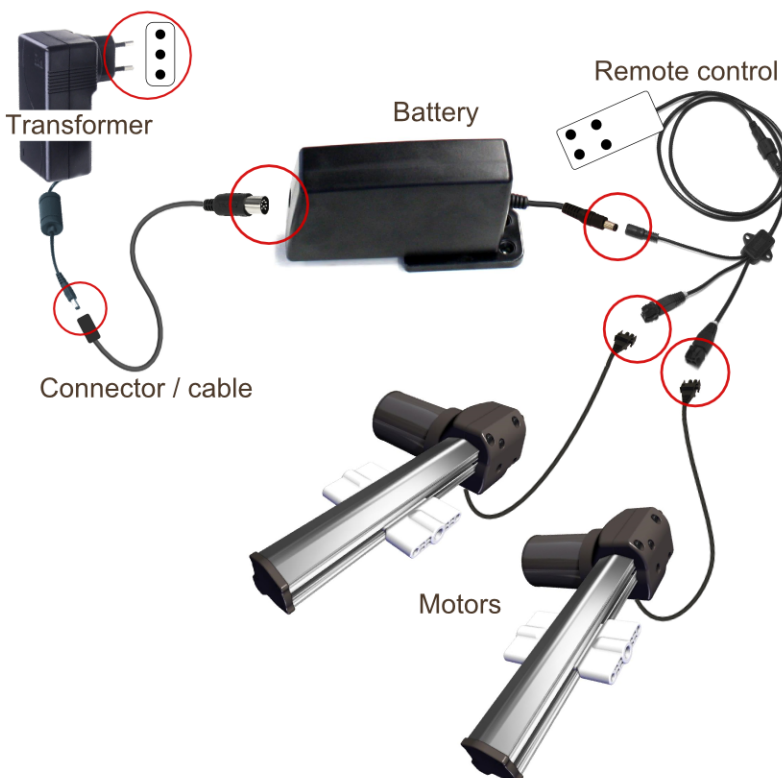
Minimum durability with SOUND SYSTEM: 2h

\*Test load 130kg

\*\*Test load 10kg

Note: The cycles amount is purely indicative and depends on the mechanism in use and its installation in finished product.

## Assembly instructions



## Accessories



Built-in connector

cod.: KE3670003



Built-in connector with LED

cod.: KE3670005



Connection cable

cod.: KE3670002



Support

cod.: KE7550001

## Use and Maintenance

- The battery must be fixed using the dedicated support avoiding any kind of interference.
- Ensure that no cable connection between battery, remote and actuators will interfere with the mechanisms's movements.
- The battery must be charged as soon as the light and/or acoustic indicator warns the low battery condition.
- Always charge until the light indicator changes from red to green (fully charged).
- The battery must be charged at least once every 3 months to guarantee the proper functioning.
- Use MOTION battery charger ONLY
- Use MOTION cables and extension cables ONLY